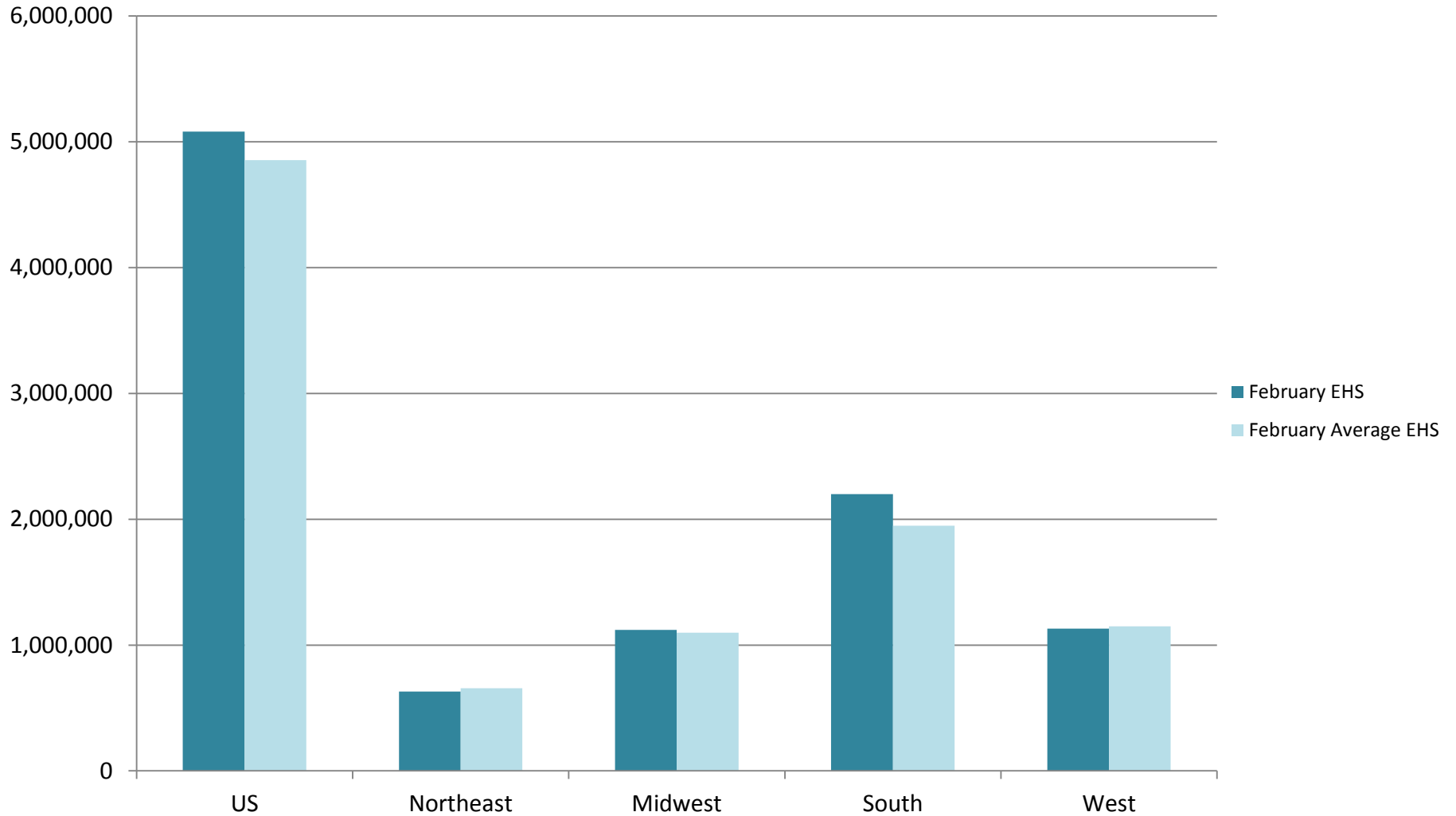


February 2016 EHS Over Ten Years

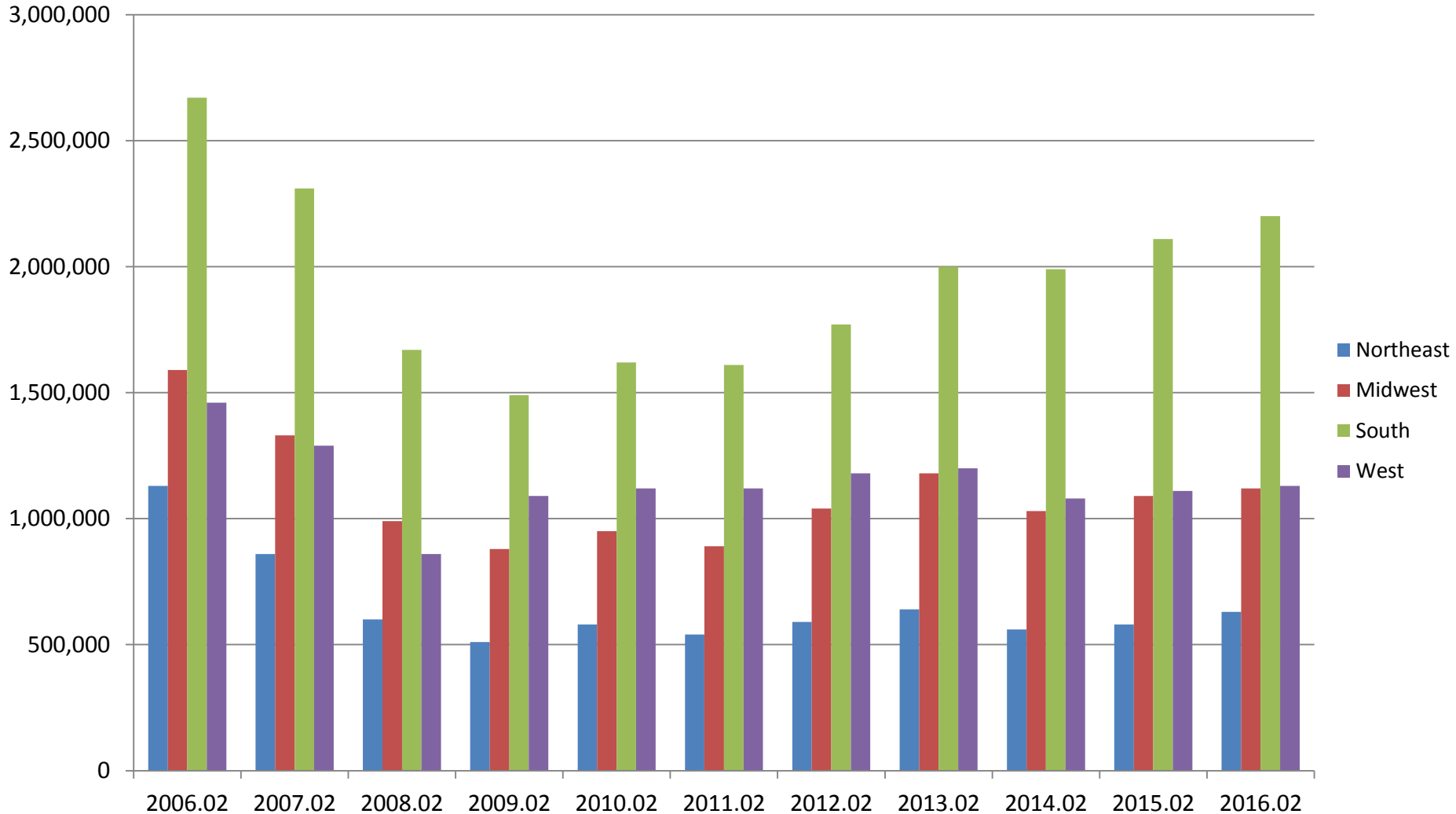
February EHS Vs February Average

Existing home sales for the US and four regions over ten February months.



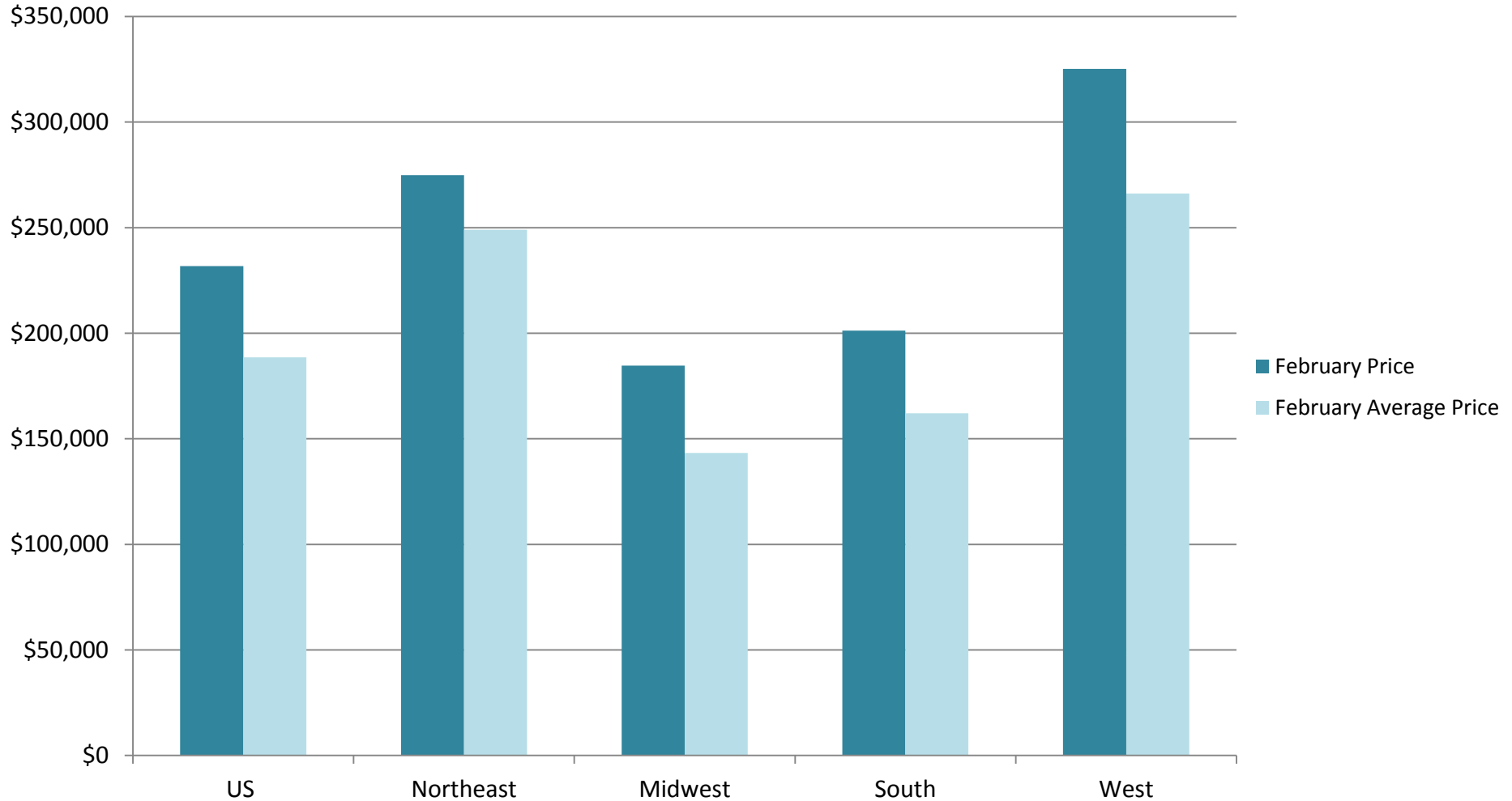
EHS for the four regions

Existing home sales for the four regions over ten August months.



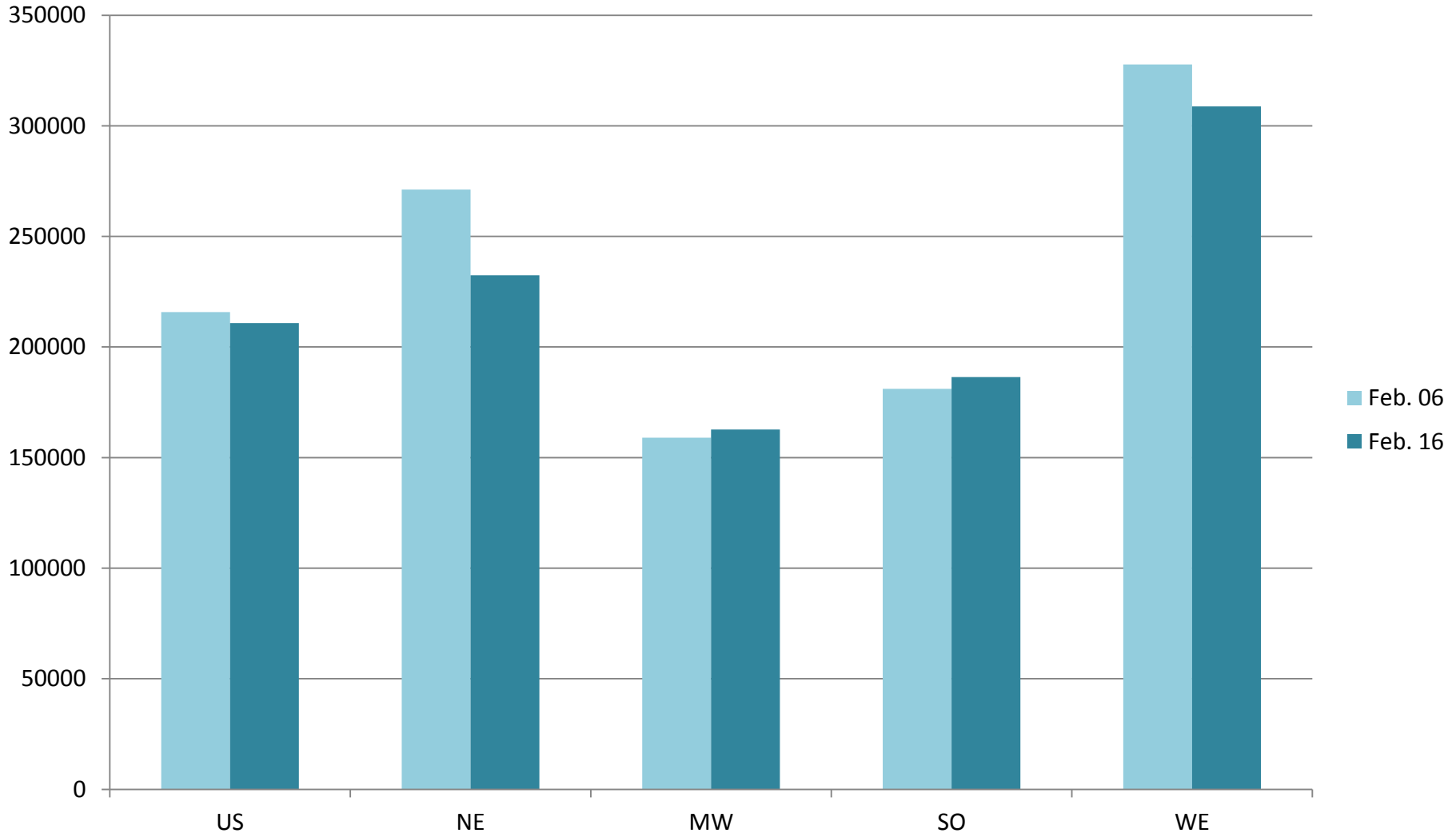
February Price Vs February Average

February median price versus ten year February average for the US and the four regions.



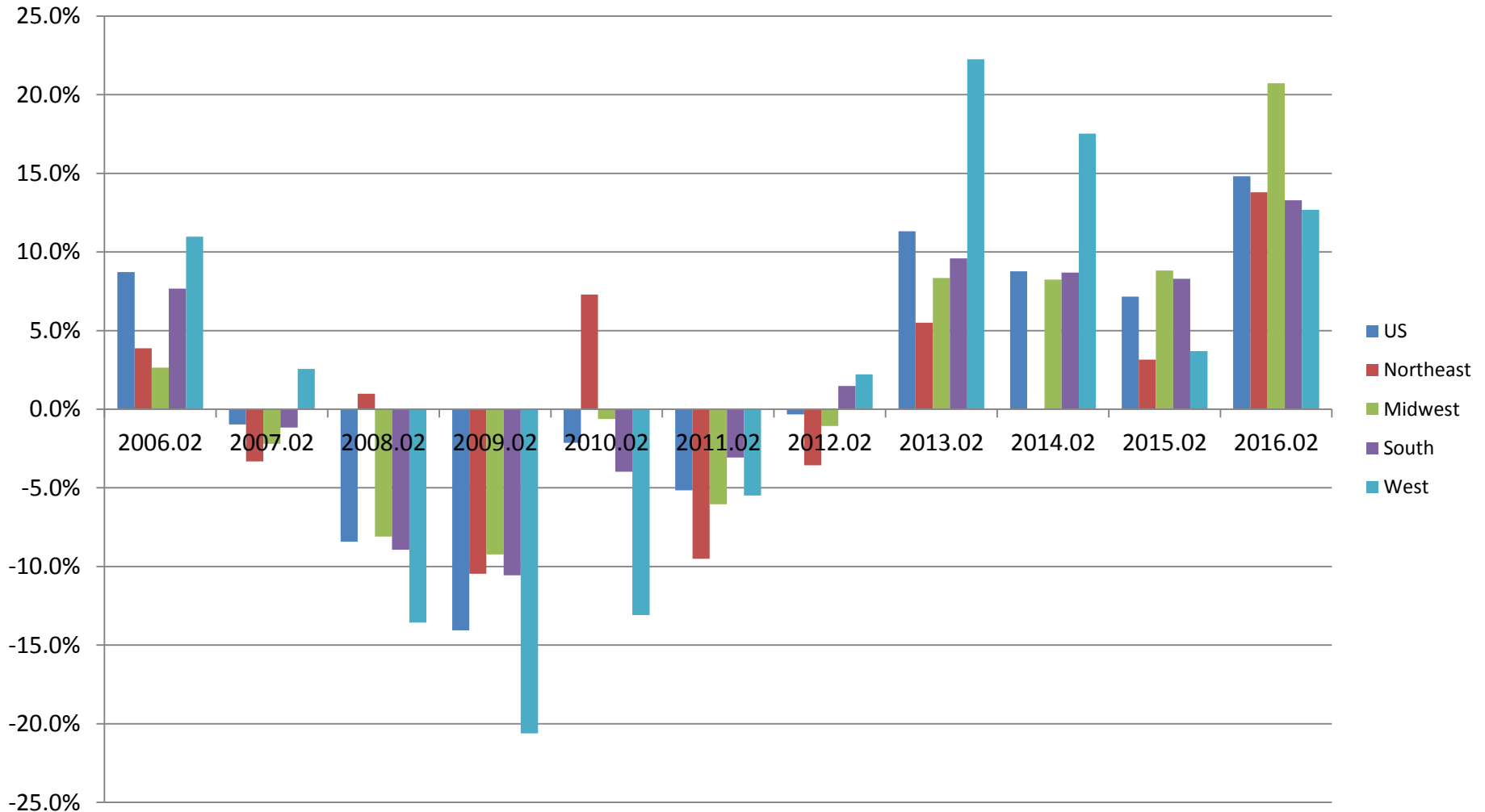
February Median Price

Median price for the US and four regions of February 2006 compared to February 2016.



Median Price % Change YoY

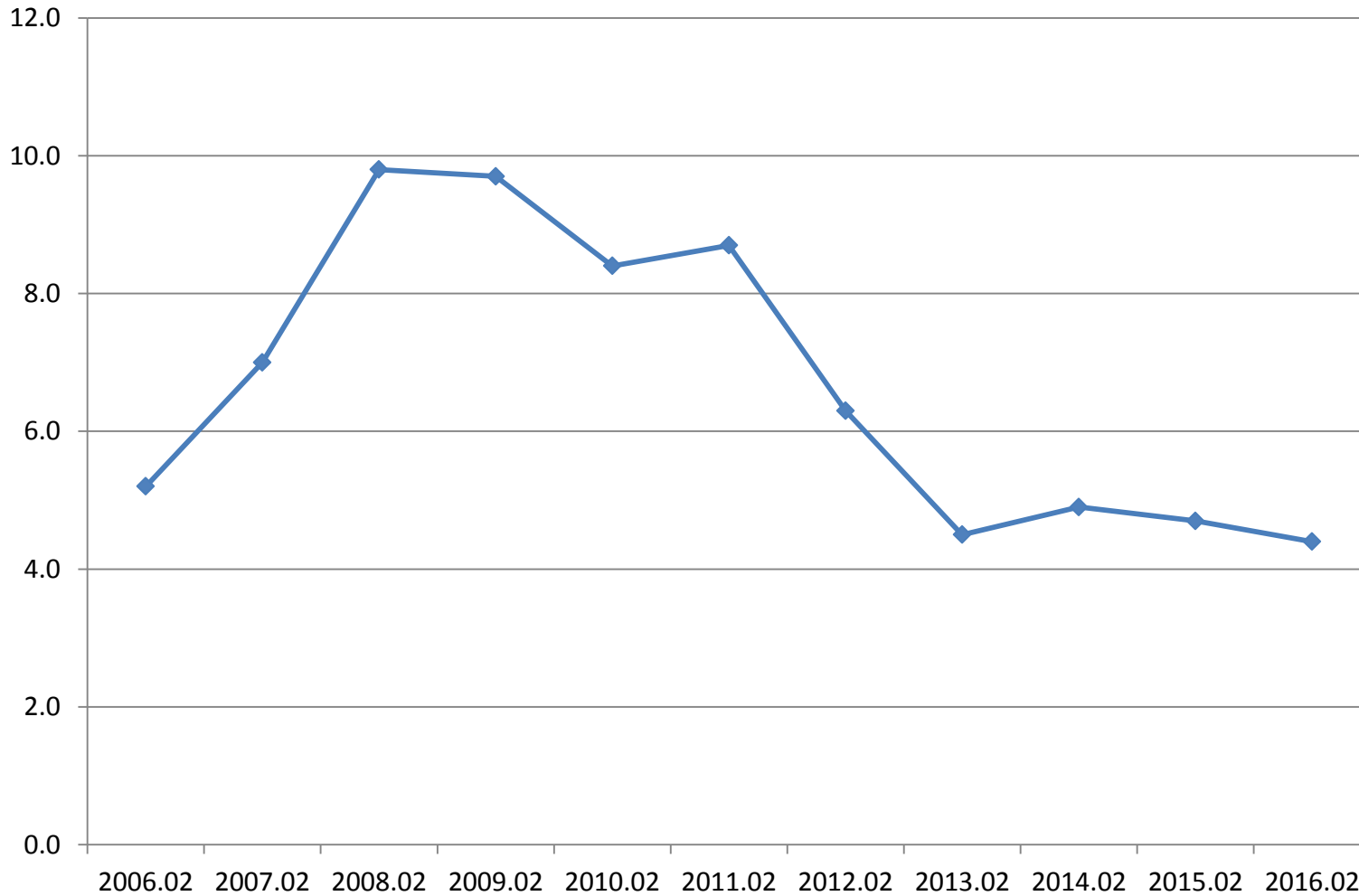
February median price percent change year over year for the US and the four regions.



Months Supply

<u>Year</u>	<u>Months Supply</u>
2006.02	5.2
2007.02	7.0
2008.02	9.8
2009.02	9.7
2010.02	8.4
2011.02	8.7
2012.02	6.3
2013.02	4.5
2014.02	4.9
2015.02	4.7
2016.02	4.4

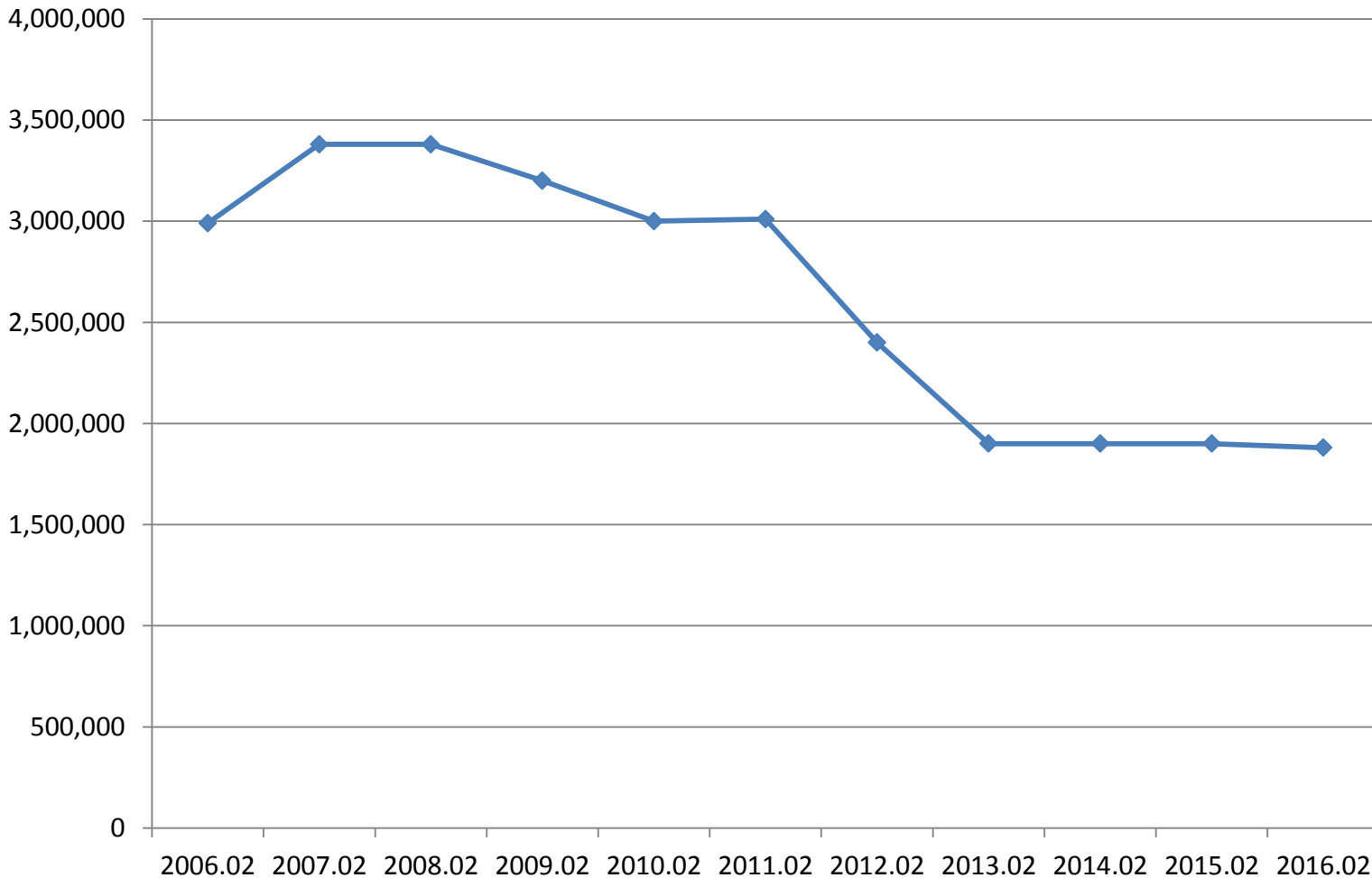
Monthly supply of homes for sale for the past ten February months.



Inventory

<u>Year</u>	<u>Inventory</u>
2006.02	2,990,000
2007.02	3,380,000
2008.02	3,380,000
2009.02	3,200,000
2010.02	3,000,000
2011.02	3,010,000
2012.02	2,400,000
2013.02	1,900,000
2014.02	1,900,000
2015.02	1,900,000
2016.02	1,880,000

The inventory of homes for sale for the past ten February months.



Housing Supply at the National Level

